



ohi

# Foot Health and Wellness

2018 Footwear Catalog



Apex Foot Health Industries is dedicated to designing and manufacturing the finest foot health products available on the market today. Our research and development team constantly explores and tests new ideas, technologies and materials to help improve the way people feel on their feet.

We are proud to present a comprehensive line of men's and women's footwear that provide superior comfort and protection in fashion-forward styles. The collection is ideal for those requiring fitting flexibility and offers state-of-the-art features and materials. Together with our Custom Diabetic Insert program, patients can benefit from maximum compliance and all-day protection.





Women's Footwear .....	4-18
Women's Athletic .....	6
Women's Petals .....	10
Women's Ambulators .....	16
Apex Fitting Tower .....	19
Men's Footwear .....	22-35
Men's Athletic .....	24
Men's Dress/Casual .....	28
Men's Ambulators .....	32
Apex Orthotics .....	36-40
Apex Copper Cloud Socks .....	39
Fitting, Fabricating & Evaluating .....	41-43
Apex Night Splints .....	43



*All styles except 1201M, 1201W, 1209M, and 1209W meet PDAC A5500 requirements. To view Apex PDAC letters visit: [www.apexfoot.com/pdac](http://www.apexfoot.com/pdac).*





# WOMEN'S FOOTWEAR

**Apex Athletic footwear is designed to prevent injuries and provide quick, comfortable relief from pain and discomfort to help you lead a healthy and active lifestyle.**

### **Padded Collar & Tongue**

Provides cushioned comfort and prevents heel slippage

### **Biomechanical Footbed**

Contoured EVA insole provides support, cushioning and shock absorption

### **Customization**

The added EVA insole allows you to easily customize the comfort and fit of the shoe by trimming the insole at the areas of pressure. The insole may also be fully removed for additional depth.

### **Molded External Heel Counter**

For supported rearfoot control

### **Triple Density Sculpted Midsole**

Designed to preserve balance between your body and ground forces





WOMEN'S  
ATHLETIC

Apex Running and Walking footwear are constructed with the most advanced technological features and represent the highest standards in performance and comfort. Innovative features are meticulously built into these extraordinary shoes to offer midfoot and rearfoot stability, pressure relief to the calcaneus, and shock attenuation for the foot and musculoskeletal system.

The multiple removable layers, soft linings and wide last design offer protection, fitting flexibility, and the accommodation of orthotics and shoe modifications. Often recommended for people with diabetes, arthritis or anyone seeking shoes for maximum comfort.

### X-Last Styles

- X-Last for superior motion control
- 5/16" removable depth in 2 layers for fitting flexibility
- Carboplast® footbridge for motion control & stability
- Slip-resistant rubber outsole for increased traction

**Sizes:** 4½ - 11, 12, 13

**Widths:** Medium (B/C), Wide (D/E),  
X-Wide (2E/3E)

### A-Last Styles

- A-Last for natural motion
- 5/16" removable depth
- Lightweight
- EVA midsole

**Sizes:** 5 - 11, 12

**Widths:** Medium (B/C), Wide (D/E),  
X-Wide (2E/3E)

### V-Last Styles

- More aggressive lug design for added traction
- Lighter weight & increased torsional rigidity
- Firmer EVA under arch for increased control
- 5/16" removable depth in 2 layers for fitting flexibility
- Multi-density midsole with supporting shank

**Sizes:** 4½ - 11, 12, 13

**Widths:** Medium (B/C), Wide (D/E),  
X-Wide (2E/3E)



LACE WALKER X-Last

LACE WALKER X-Last



X826W  
Color: White



X821W  
Color: White/Grey

X801W  
Color: Black

BOSS RUNNER X-Last

REINA RUNNER X-Last



X521W  
Color: Periwinkle

X527W  
Color: Silver/Sea Blue

X522W  
Color: White/Blue



X532W  
Color: Periwinkle

\* Patented Lockdown™  
Heel Strap Design

***FITLITE  
COLLECTION***

**BREEZE ATHLETIC KNIT A-LAST**





## BREEZE ATHLETIC KNIT - FITLITE COLLECTION A-Last



A7000W  
Color: Grey

A7200W  
Color: Pink

A7100W  
Color: Navy

### Features:

Our vibrant FitLite Athletic footwear is constructed with a new A-Last for superior fit and function.

- EVA Midsole
- Rubber outsole for traction & stability
- Padded tongue & collar
- Bungee laces

---

## SIERRA TRAIL RUNNER V-Last



V753W  
Color: Grey/Purple

V752W  
Color: Brown/Pink

## WALKERS V-Last



V952W  
Color: White

V854W  
Color: White/Periwinkle

### Features:

- More aggressive lug design for added traction
- Lighter weight & increased torsional rigidity
- Firmer EVA under arch for increased control
- 5/16" removable depth in 2 layers for fitting flexibility
- Multi-density midsole with supporting shank



## WOMEN'S PETALS

This footwear exceeds  
**SATRA** and **Mark II** slip  
resistant standards for dry,  
wet and oily surfaces!

### The lightest fashion-forward therapeutic shoes ever made!

Soft, light and beautiful, our newest women's footwear collection offers styles designed to provide maximum comfort and protection. With its incredibly lightweight structure and removable double depth in two layers, Apex Petals are a perfect choice for women who need superior support and adjustability.

Beautifully styled, the collection is crafted from rich supple leathers and includes feminine designs for every occasion. The slip-resistant soles made from injected EVA to ensure the shoes deliver the necessary safety and protection your patients require without the added weight. Apex Petals help your patients lead a healthy and active lifestyle with confidence and grace.

- 5/16" removable depth in 2 layers
- Full grain leather uppers
- Soft fabric moisture wicking linings
- Roomy toe box design
- Firm heel counters for stability & control
- New slip-resistant rubber outsole for traction & stability

**Sizes:** 5-11, 12, 13

**Widths:** Medium (B/C), Wide (D/E), X-Wide (2E/3E)



Indicates shoe features  
a slip-resistant sole.



**5/16" Removable  
Depth in 2 Layers**

## DONNA Petals



A730W  
Color: Black

## EMMY Petals



A720W  
Color: Black

A723W  
Color: Tan

## EVELYN Petals



A215W  
Color: Dark Brown

A205W  
Color: Black Croc

A200W  
Color: Black

## JANE Petals



A340W  
Color: Black

A341W  
Color: Dark Brown



## JANICE Petals



Sizes: 5-11, 12, 13

Widths: Medium (B/C), Wide (D/E),  
X-Wide (2E/3E)



A301W  
Color: Pewter

A300W  
Color: Black

A302W  
Color: Bone

## LINDA Petals



A832W  
Color: Taupe

A830W  
Color: Black

## LISA Petals



A330W  
Color: Black

A335W  
Color: Dark Brown

## MIRANDA Petals



A350W  
Color: Black

# APEX SLIP-RESISTANT FOOTWEAR

**For people who want therapeutic support, unsurpassed comfort and protection**

Beautifully styled, the collection is crafted from rich supple leathers & includes fashionable designs for every occasion. The slip-resistant soles made from injected EVA ensure the shoes deliver the necessary safety and protection your patients require without the added weight.

- Firm heel counters for stability & control
- New slip-resistant rubber outsole for traction & stability

Apex slip-resistant shoe styles:

- Women's Petals
- Men's Venture



Indicates shoe features a slip-resistant sole.

This footwear exceeds SATRA and Mark II slip resistant standards for dry, wet and oily surfaces!

Slip Resistant

Apex

## REGINA Petals



**A700W**  
Color: Black

**A705W**  
Color: Dark Brown

## ROBYN Petals



**A543W**  
Color: Tan

**A540W**  
Color: Black

### Features:

- Soft fabric moisture-wicking linings
- Roomy toe box design
- Slip-resistant rubber outsole for traction
- Firm heel counters for stability & control

Sizes: 5-11, 12, 13

Widths: Medium (B/C), Wide (D/E),  
X-Wide (2E/3E)

## SYDNEY Petals



**A2300W**  
Color: Bone

**A2200W**  
Color: Camel

## CLASSIC STRAP Petals



**A3000W**  
Color: Black

## MOORE BALANCE SHOE



### Balance Footwear

Scientifically designed to  
reduce one's risk of falling.

Sizes: 5-11, 12  
Widths: M, W, XW



**A3200W**  
Color: Black

\* References available at  
[www.apexfoot.com/mbs/references](http://www.apexfoot.com/mbs/references)



# Designed by a team of doctors and pedorthists to provide superior comfort and protection for those with diabetes, arthritis or painful foot conditions.

## Cushioning

Removable orthotics and polyurethane outsoles absorb shock forces and provide cushioning.

## Depth

Multiple removable insoles provide a 1/2" of removable depth for maximum protection and fitting flexibility.

## Stability

Hidden depth sole design with raised sidewalls and firm heel counters.

## SmartGrip™

Polyurethane sole for safety and stability.



## Customization

The added EVA insole allows you to easily customize the comfort and fit of the shoe by trimming the insole at the areas of pressure. The insole may also be fully removed for additional depth.

## Protection

High, wide toe boxes and soft, safe linings help protect the foot from injury.

## Fit

Straight last design, with multiple removable insoles ensure a proper fit for all foot types.



## WOMEN'S AMBULATOR

Designed to limit stress at the areas of the foot most susceptible to pain. Ambulator® Biomechanical footwear provides unsurpassed comfort and protection with unique features such as SmartGrip™ polyurethane soles, state-of-the-art removable comfort orthotics and soft leather linings. Recently updated with eye-catching styles, Ambulator Biomechanical footwear is often recommended for those with diabetes, arthritis or for those seeking a shoe that provides maximum comfort, stability and added protection.

### Biomechanical Collection

- ½" removable hidden depth in 3 layers
- Genuine leather uppers
- EVA footbed
- SmartGrip™ polyurethane soles for safety & stability
- Soft linings with leather for maximum comfort & breathability

**Sizes:** 4½-11, 12, 13

**Widths:** Medium (B/C), Wide (D/E),  
X-Wide (2E/3E)

### Conform Collection

- Plastazote® foam lining molds to the foot for a customized fit
- SmartGrip™ polyurethane soles for safety & stability
- Removable conform orthotic with Plastazote®
- ½" removable hidden depth in 2 layers
- High, wide toe boxes

**Sizes:** 4½-11, 12, 13

**Widths:** Medium (B/C), Wide (D/E),  
X-Wide (2E/3E)

### Stretchables Collection

- Single hook-&-loop strap for maximum adjustability & easy on/off wear
- Seamless, stretchable uppers stretch to accommodate foot problems
- Soft fabric linings wick moisture away from the foot
- ½" removable depth to accommodate orthotics
- 3 removable layers for fitting flexibility
- Recommended for diabetic, arthritic or swollen feet
- Machine washable (T2000 & T2400 only)

## MARY JANE

Biomechanical



B6000W  
Color: Black



B3000W  
Color: Black

## ACTIVE WALKERS

Biomechanical



G8010W  
Color: Black



G8210W  
Color: White





## DOUBLE STRAP Conform

Sizes: 4½-11, 12, 13

Width: Medium (B/C), Wide (D/E), X-Wide (2E/3E)



1264W  
Color: Taupe

1260W  
Color: Black

## CLASSIC OXFORD Conform



1270W  
Color: Black

## SINGLE STRAP Stretchables

Wide: 4½-12, 13

X-Wide: 6-13

XX-Wide: 7-13

XXX-Wide: 7-13 (T2000 Only)



T2000  
Color: Black

T2400  
Color: Taupe

## SINGLE STRAP Stretchable

Wide: 4½/5-12½/13

X-Wide: 5½/6-13½/14



1201W  
Color: Black

\*Available as pairs and singles

## DOUBLE STRAP Stretchable

Wide: 4½-11, 12, 13

X-Wide: 6-13

XX-Wide: 7-13



1200W  
Color: Black

## TRIPLE STRAP Stretchable

Wide: 4½/5-12½/13

X-Wide: 5½/6-13½/14

XX-Wide: 5½/6-14½/15



1209W\*  
Color: Black

\*Only available in right or left singles



# EVERYTHING YOU NEED IN ONE DISPLAY CENTER!

Our state-of-the-art APEX Rotating Fitting Tower is the heart of your shoe program.

A shoe sample kit that includes our best-selling footwear in the most requested sizes ships with the tower. Its purpose is to offer patients corresponding shoes to try on once their feet are measured. This ensures a perfect fit every time!

The complete fitting station includes:

- Fitting tower (68"x34"x34")
- Shoe sample kit (40 half pairs)
- Brannock measuring device
- 25 patient brochures
- One molded pillow for A5512 heat-molded inserts

Slat Wall Display also available, which includes:

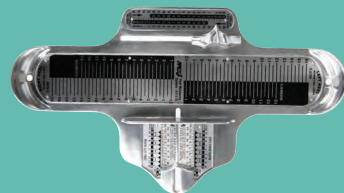
- 18 slat wall shelves
- Shoe sample kit (18 half pairs)
- Brannock measuring device
- One molded pillow for A5512 heat-molded inserts

## ROTATING FITTING-TOWER DISPLAY

### Item Description

- FD800-1 APEX SHOE DISPLAY- TOWER & BASE
- FD800-2 APEX SHOE DISPLAY- SIGNAGE/SHEVES
- FD800-M MEN'S SHOE DISPLAY SAMPLE KIT
- FD800-W WOMEN'S SHOE DISPLAY SAMPLE KIT

Shoe selection may be updated from those featured in this photograph



# YOU DON'T HAVE TO FALL!

Falls among our senior population is a little-known secret in healthcare. Most people who are having balance problems believe that falling is just a part of getting older. They keep it secret from family, friends and doctors for fear of losing their independence. Then they have a really bad fall and break their hip...or worse.



One in three Americans aged 65 or older falls each year



Every 19 minutes, an older adult dies from a fall



Every 11 seconds, an older adult is treated in the emergency room for a fall



Falls are the leading cause of death from injury among Americans age 65 or older

## ARE YOU AT RISK FOR FALLING?

Ask your doctor about the **MOORE BALANCE BRACE** and request a fall-risk assessment today!

Visit [www.myfallrisk.com](http://www.myfallrisk.com) to locate a practitioner near you with experience in fall-risk prevention.



# UNSTEADY ON YOUR FEET?

**The Moore Balance Shoe (MBS)** is the first-ever footwear scientifically designed to reduce one's risk of falling\*.

## Features of the Moore Balance Shoe include:

1. Heel Counter Loop for easy donning
2. Firm, adjustable heel counter with convenient Velcro® strap closure (AFO feature)
3. High, padded heel collar for comfort and added support
4. Extended tongue opening for easy AFO fit (AFO feature)
5. Combination Lycra®/ washable synthetic leather upper is lightweight and accommodating
6. Textured insole provides proprioceptive sensory feedback for polyneuropathy
7. Extra depth with removable spacer for fitting customization
8. Firm, supportive midsole
9. Low-profile heel for maximum postural stability

- **Increased toe spring and smooth outer sole for trip avoidance**
- **Slip-resistant sole**
- **Meets standards for coverage under Medicare's Diabetic Shoe Program**

*Men's featured on page 30*

**A3200M**

Men's Sizes: 7-13, 14, 15

Widths: M, W, XW

*Women's featured on page 14*

**A3200W**

Women's Sizes: 5-11, 12

Widths: M, W, XW



\* References available at [www.apexfoot.com/mbs/references](http://www.apexfoot.com/mbs/references)



# MEN'S FOOTWEAR



# Apex Athletic footwear is designed to prevent injuries and provide quick relief from pain and discomfort to help you lead a healthy and active lifestyle.

## Padded Collar & Tongue

Provides cushioned comfort and prevents heel slippage

## Biomechanical Footbed

Contoured EVA insole provides support, cushioning and shock absorption

## Customization

The added EVA insole allows you to easily customize the comfort and fit of the shoe by trimming the insole at the areas of pressure. The insole may also be fully removed for additional depth.

## Molded External Heel Counter

For supported rearfoot control

## Multi-Density Midsole

Strategically placed firm EVA under medial arch for additional support





MEN'S  
ATHLETIC

Apex Running and Walking footwear are constructed with the most advanced technological features and represent the highest standards in performance and comfort. Innovative features are meticulously built into these extraordinary shoes to offer midfoot and rearfoot stability, pressure relief to the calcaneus, and shock attenuation for the foot and musculoskeletal system.

The multiple removable layers, soft linings and wide last design offer protection, fitting flexibility, and the accommodation of orthotics and shoe modifications. Often recommended for people with diabetes, arthritis or anyone seeking shoes for maximum comfort.

### X-Last Styles

- X-Last for superior motion control
- 5/16" removable depth in 2 layers for fitting flexibility
- Carboplast® footbridge for motion control & stability
- Slip-resistant rubber outsole for increased traction

**Sizes:** 6½ - 13, 14, 15

**Widths:** Medium (C/D), Wide (E/2E), X-Wide (3E/4E)

### V-Last Styles

- More aggressive lug design for added traction
- Lighter weight & increased torsional rigidity
- Firmer EVA under arch for increased control
- 5/16" removable depth in 2 layers for fitting flexibility
- Multi-density midsole with supporting shank

**Sizes:** 6½ - 13, 14, 15

**Widths:** Medium (C/D), Wide (E/2E), X-Wide (3E/4E)

### A-Last Styles

- A-Last for natural motion
- 5/16" removable depth
- Lightweight
- EVA midsole

**Sizes:** 7-13, 14, 15

**Widths:** Medium (C/D), Wide(E/2E), X-Wide (3E/4E)

## LACE WALKERS X-Last



**X801M**  
Color: Black



**X821M**  
Color: White/Grey



**X826M**  
Color: White

## ATHLETIC STRAP WALKER X-Last



**A6000M**  
Color: Black

## STRAP WALKERS X-Last



**X903M**  
Color: Black



**X920M**  
Color: Black



**X926M**  
Color: White

## RHINO RUNNER X-Last



**X532M\***  
Color: Blue

\* Patented Lockdown™  
Heel Strap Design



## BOSS RUNNERS X-Last



\* Patented Lockdown™  
Heel Strap Design

**X521M**  
Color: Blue

**X520M\***  
Color: Black

**X522M\***  
Color: White

## STEALTH RUNNER V-Last



**V551M**  
Color: Blue

## SIERRA TRAIL RUNNERS V-Last

- SmartMask™ toe guard & external heel counter
- Nylon Cordura™ uppers with nubuck leather
- Water resistant



**V751M**  
Color: Brown

**V753M**  
Color: Grey/Blue

## WALKERS V-Last



**V854M**  
Color: White/Blue

**V950M**  
Color: Black

**V952M**  
Color: White

### X-Last and V-Last Features:

5/16" removable depth in 2 layers for fitting flexibility

**Sizes:** 6½ - 13, 14, 15

**Widths:** Medium (C/D), Wide (E/2E), X-Wide (3E/4E)

## BOLT ATHLETIC KNIT - FITLITE COLLECTION A-Last

Our FitLite Athletic footwear is constructed with A-Last for superior fit and function.

- EVA Midsole
- Rubber outsole for traction & stability
- Padded tongue & collar
- Bungee laces



**A7000M**  
Color: Black

**A7100M**  
Color: Navy

**A7200M**  
Color: Lime

## ATHLETIC BUNGEE A-Last

**Sizes:** 7-13, 14, 15

**Widths:** Medium (C/D), Wide (E/2E), X-Wide (3E/4E)



**A5000M**  
Color: Black

## ATHLETIC BUNGEE A-LAST

- A-Last for natural motion
- Innovative bungee closure
- Synthetic upper
- Mesh accents for breathability
- 5/16" removable depth in 2 layers
- Rubber outsole for traction & stability
- EVA midsole





## MEN'S DRESS/CASUAL

The Apex men's Dress/Casual collection offers the ultimate in comfort and function without compromising on style. All shoes are built on anatomical lasts designed to provide a comfortable, healthy fit for your feet. Each pair is meticulously crafted with the highest quality material technologies. Features include: soft, full-grain leathers, moisture-transferring linings, and lightweight polyurethanes.

The Lexington™ collection features an advanced EVA performance insole for maximum comfort. The Ariya™ collection includes removable layers to accommodate orthotics and for fitting flexibility.

### Lexington™

- Removable EVA insole
- 1/4" removable depth
- Soft leather linings for comfort & breathability
- Firm heel counters & soft padded collars
- Polyurethane outsole for cushioning, traction & stability
- Luxurious, full-grain leather uppers

**Sizes:** 7-13, 14

**Widths:** Medium (C/D), Wide (E/2E), X-Wide (3E/4E)

### Ariya™

- Luxurious, full-grain leather uppers
- Polyurethane outsoles for traction & stability
- Firm heel counters & soft padded collars
- Polyester/leather linings help transfer moisture
- 5/16" removable depth in 2 layers

**Sizes:** 7-13, 14, 15

**Widths:** Medium (C/D), Wide (E/2E), X-Wide (3E/4E)

### Venture

- Full-grain leather uppers
- Soft, breathable mesh linings
- Padded tongue & collar
- 5/16" removable depth in 2 layers
- Slip-resistant rubber outsole for traction & stability

**Sizes:** 7-13, 14, 15

**Widths:** Medium (C/D), Wide (E/2E), X-Wide (3E/4E)



Indicates shoe features  
a slip-resistant sole.

## STRAP LOAFER Lexington



LT200M  
Color: Black

LT210M  
Color: Brown



Fully functional vamp opens  
all the way for easy foot insertion.

## CAP TOE Lexington



LT600M  
Color: Black

LT610M  
Color: Brown

## MOC TOE Lexington



LT900M  
Color: Black

LT910M  
Color: Brown

## MOC TOE Ariya



Y900M  
Color: Black

Y910M  
Color: Brown

### Features:

- Polyurethane outsoles for traction & stability
- Pressure relief layer for customized support
- Firm heel counters & soft padded collars



## CLASSIC STRAP Venture



This footwear exceeds SATRA and Mark II slip resistant standards for dry, wet and oily surfaces!



**A3000M**  
Color: Black

## CLASSIC BOAT SHOES Venture



This footwear exceeds SATRA and Mark II slip resistant standards for dry, wet and oily surfaces!



**A1000M**  
Color: Black

**A1100M**  
Color: Brown

## CLASSIC STRAP BOAT SHOES Venture



This footwear exceeds SATRA and Mark II slip resistant standards for dry, wet and oily surfaces!



**A2000M**  
Color: Black

**A2100M**  
Color: Brown

## HIKING BOOTS Ariya



**A4000M**  
Color: Black

**A4100M**  
Color: Brown

## CASUAL BOOTS Chukka

**NEW**

Available in April 2018



**LT410M**  
Color: Brown

## MOORE BALANCE SHOE



Balance Footwear

Scientifically designed to reduce one's risk of falling.

Sizes: 7-13, 14, 15  
Widths: M, W, XW  
Depth: 5/16"



**A3200M**  
Color: Black

\* References available at  
[www.apexfoot.com/mbs/references](http://www.apexfoot.com/mbs/references)

# INTRODUCING THE APEX CHUKKA BOOT... A CLASSIC DONE RIGHT.

## AVAILABLE IN APRIL 2018

### About the CHUKKA BOOT:

Quality, comfort and style blend effortlessly in this latest addition to the Apex men's Lexington collection. Designed for both work and play, the Apex Chukka Boot is equally at home in a casual or dress setting. Supremely fashionable and a great choice for any man of distinction, this handsome Chukka is built to the exact standards that have made Apex footwear the therapeutic brand of choice for millions.

### Features:

- Luxurious full-grain, oil-tanned leather upper
- Breathable, open-air, moisture-wicking polyester, mesh lining
- An advanced EVA performance insole for maximum comfort
- Lace-up style for easy foot insertion
- 1/4" removable depth for perfect fit and to accommodate orthotic inserts
- 4" high, 1" heel and rounded toe
- Polyurethane lug outsole for cushioning, traction, and stability
- Meets Medicare PDAC specifications

**Model:** LT410M Chukka

**Sizes:** 7-13, 14

**Widths:** Medium (C/D)  
Wide (E/2E)  
X-Wide (3E/4E)

**Depth:** 1/4"





MEN'S  
AMBULATOR

Designed to limit stress at the areas of the foot most susceptible to pain. Ambulator® Biomechanical footwear provides unsurpassed comfort and protection with unique features such as SmartGrip™ polyurethane soles, state-of-the-art removable comfort orthotics and soft leather linings. Recently updated with eye-catching styles, Ambulator Biomechanical footwear is often recommended for those with diabetes, arthritis or for those seeking a shoe that provides maximum comfort, stability and added protection.

## Biomechanical Collection

- EVA footbed
- Genuine leather uppers
- SmartGrip™ polyurethane soles for safety & stability
- Open-weave polyester linings for maximum comfort & breathability
- ½" removable hidden depth in 3 layers
- Moisture-wicking, foam-backed fabric linings for cushioning & protection (Active Walkers only & B5000)

**Sizes:** 6½ - 13, 14, 15, 16

**Widths:** Medium (C/D), Wide (E/2E), X-Wide (3E/4E)

• B3000M, G8210M, G8010M, 1260M available in XX-Wide (5E/6E)

## Stretchables Collection

- Single hook-&-loop strap for maximum adjustability and easy on/off wear
- Seamless, stretchable uppers stretch to accommodate foot problems
- Soft fabric linings wick moisture away from the foot
- ½" removable depth to accommodate orthotics
- 3 removable layers for fitting flexibility
- Recommended for diabetic, arthritic or swollen feet
- Machine washable (T2000 & T2400 only)

## Conform Collection

- High, wide toe boxes
- Genuine leather uppers
- Plastazote® foam lining molds to the foot for a customized fit
- SmartGrip™ polyurethane soles for safety & stability
- ½" removable hidden depth in 2 layers
- Removable conform orthotics with Plastazote®

**Sizes:** 6½ - 13, 14, 15, 16

**Widths:** Medium (C/D), Wide (E/2E), X-Wide (3E/4E)

## ACTIVE WALKERS Biomechanical



G7000M  
Color: Black

G7200M  
Color: White



G8210M\*  
Color: White

G8010M\*  
Color: Black

## CLASSIC OXFORD Biomechanical



B3000M\*  
Color: Black

B3100M  
Color: Brown

## CLASSIC MOC Biomechanical



B5000M\*  
Color: Black

Fully functional vamp  
opens all the way for  
easy foot insertion.

\* Also available in XX-Wide (5E/6E)





## BIO BOOTS Biomechanical



**B4200M**  
Color: Black  
(6" Triple Strap)

**B4500M**  
Color: Black  
(6" Lace)

### Features:

- Genuine Leather Uppers
- SmartGrip™ polyurethane soles for safety & stability

Size: 6½-13, 14, 15, 16  
Widths: Medium (C/D), Wide (E/2E),  
X-Wide (3E/4E)

## CLASSIC OXFORD Conform

- High, wide toe boxes
- Removable orthotic with Plastazote®



**1261M**  
Color: Brown

**1260M\***  
Color: Black  
\* 1260M also available  
in XX-Wide (5E/6E)

## CLASSIC OXFORD Conform

Sizes: 6½-13, 14, 15, 16  
Width: Medium (B/C), Wide (D/E),  
X-Wide (2E/3E)



**1270M**  
Color: Black

## STRETCHABLES COLLECTION

Medium: 3½-11, 12

X-Wide: 6-13, 14, 15, 16

Wide: 5-13, 14, 15, 16

XX-Wide: 6-13, 14, 15, 16 (T2000 Only)



T2000

Color: Black

T2400

Color: Taupe

### Features:

- Recommended for those with diabetes, arthritis or swollen feet
- Soft fabric linings wick moisture away from the foot
- ½" removable depth to accommodate orthotics
- 3 removable layers for fitting flexibility

## SINGLE STRAP Stretchable

Medium: 3½/4-11½/12

Wide: 4½/5-14½/15



1201M

Color: Black

\*Available as pairs and singles

## DOUBLE STRAP Stretchable

Medium: 3½-11, 12

Wide: 5-13, 14, 15, 16

X-Wide: 6-13, 14, 15, 16



1200M

Color: Black

## TRIPLE STRAP Stretchable

Medium: 3½/4-11½/12

Wide: 4½/5-15½/16

X-Wide: 4½/5-15½/16



1209M\*

Color: Black

\*Only available in right or left singles

## READY-MADE PLASTAZOTE® THERMOTHOTICS™

Apex Thermothotics™ is a unique line of inserts designed to help protect the “at risk” patient with diabetes. Everything in the Thermothotic line is completely heat moldable and features a Plastazote® top cover for continuous protection and comfort.

.....

Apex Thermothotics™ are available in a variety of different base material options including: Plastazote® X-Firm, ThermoSKY® EVA and the unique heat moldable urethane, Polyetherdiol. Apex Thermothotics make it easy and cost effective for you to properly protect your patients with diabetes and are **PDAC verified for A5512.**

### ANATOMICAL THERMOTHOTICS THERMOSKY® EVA BASE

40668



Multi-density orthotics feature a conformable Plastazote® 1/8" top cover for continuous protection and comfort. The ThermoSKY® EVA 3/16" base is lightweight, durable and heat moldable. Easy to trim and grind.

*Top - 1/8" Plastazote® Medium. Base Material - 3/16" ThermoSKY EVA - 45 Dur. (Shore A) Anatomical Shape*

**MEN'S SIZES: 6-12 1/2, 13, 14, 15, 16**

**WOMEN'S SIZES: 4-10 1/2, 11, 12, 13**

### CONTOUR THERMOTHOTICS - THERMOSKY EVA BASE

1584



Multi-density orthotics feature a conformable Plastazote® 1/8" top cover for continuous protection and comfort. The ThermoSKY EVA 3/16" base is lightweight, durable and heat moldable. Easy to trim and grind.

*Top - 1/8" Plastazote® Medium. Base Material - 3/16" ThermoSKY EVA - 45 Dur. (Shore A) Contour Shape*

**MEN'S SIZES: 6-12 1/2, 13, 14, 15, 16**

**WOMEN'S SIZES: 4-10 1/2, 11, 12, 13**

## CONFORM INSOLES

Anti-Shox® Conform Insole Orthotics and Conform Insoles with Gel are comfortable, lightweight orthotics that absorb shock and mold to your feet for unsurpassed comfort and protection.

*Apex Conform Insoles are NOT covered by Medicare.*

*For orthotics covered by Medicare, please see page 40.*

### APEX CONFORM INSOLES

40664



The Plastazote® top cover conforms to accommodate pressure "hot" spots, making this insole recommended for diabetic and arthritic patients.

**MEN'S SIZES: 6-16 (WHOLE SIZES ONLY)**

**WOMEN'S SIZES: 4-13 (WHOLE SIZES ONLY)**

### APEX CONFORM INSOLES WITH GEL

40665



The insoles feature state-of-the-art gel technology for extra protection at the areas most susceptible to pain. The Plastazote® top cover conforms to accommodate pressure "hot" spots, making this insole ideal for diabetic and arthritic patients.

**MEN'S SIZES: 6-16 (WHOLE SIZES ONLY)**

**WOMEN'S SIZES: 4-13 (WHOLE SIZES ONLY)**





# PREFABRICATED ORTHOTIC SUPPORTS

## DYNAFLANGE™

### The Greatest Advancement in Orthotics in 60 Years

The patented DynaFlange® represents a profoundly new approach to prefabricated orthotic supports. This device dynamically manages motion with every step. Enhanced shock absorption means greater comfort, especially when standing for long periods on hard surfaces.



### REDUCED IMPACT FORCES

Enhanced shock absorption means greater comfort - especially when standing for long periods on hard surfaces.



### DYNAMIC ENERGY RETURN

The patented rearfoot flange flexes during heel strike, storing energy that is released during the subsequent phases of gait, efficiently positioning the foot for optimal propulsion. DynaFlange® does the work so you don't have to!



### POSTURAL EFFICIENCY

DynaFlange® orthotic supports improve center of pressure and stability through all phases of the gait cycle which results in improved posture while standing, walking or running.

## FEEL THE SCIENCE...

Healthcare professionals prescribe Dynaflange® to treat the following conditions:

- Equinus
- Plantar fasciitis
- Pronation & supination
- Apropulsive gait
- Ankle instability
- Heel, hip, knee and lower back pain

... And because they just feel great!



ITEM #	82000	82100	82200	82300	82400	82500	82600	82700
SIZE	ASM	A	B	C	D	E	F	G
FITS MEN	4.5-5	5.5-6	6.5-7	7.5-8	8.5-9.5	10-11	11.5-12.5	13
FITS WOMEN	5.5-6	6.5-7	7.5-8	8.5-9	9.5-10.5	11-12	12.5-13.5	14



## THE MOST COMFORTABLE, HEALTHFUL AND FEATURE-RICH sock ever designed!

### KEEP YOUR FEET DRY AND HELP PREVENT ULCERATION BY WEARING COPPER CLOUD SOCKS.

What better way to ensure you get the most out of your Apex shoes than to pair with the finest quality socks?

You will love these exquisitely comfortable socks and feel the copper infused benefits of Copper Cloud socks, preventing bacterial and fungal growth that cause foot odor and even promoting softer skin!



#### **X-Small**

Men: 4-6  
Women: 5-7

#### **Small**

Men: 6.5-8  
Women: 7.5-9

#### **Medium**

Men: 8.5-10  
Women: 9.5-11

#### **Large**

Men: 10.5-12  
Women: 11.5-13

#### **Available in 2 Colors:**

- Black
- White

#### **Available in 3 Styles:**

- Crew Length
- Ankle
- No Show

#### **Available in 4 Sizes:**

- Extra Small
- Small
- Medium
- Large



1. Non-binding welt
2. Moisture-wicking acrylic to keep feet cool and dry
3. Y-heel and toe construction for a perfect fit
4. Heel and forefoot padding
5. Multi-benefit, copper-infused yarn
6. Light arch support
7. Ventilated airflow
8. Seamless construction for maximum protection

## APEX® CUSTOM DIABETIC INSERTS

- Fabricated to precisely fit Apex footwear
  - No adjustments necessary
  - Guaranteed to fit
- We only use genuine Plastazote® topcovers
- Available with modifications to meet patients' needs
- Medicare PDAC Code A5513 Verified

## THERMOSKY® EVA BASE

45 Durometer (Shore A)  
CU40668



Conformable Plastazote® top cover. Light-weight ThermoSKY® EVA base.

Also available in Trilam version with a layer of PPT for protection from shock and shear.



- Always shipped bundled with shoes
  - Unparalleled turn-around time
  - Custom inserts and shoes at your fingertips!
- Learn about our in-office, state-of-the-art ScanCast 3D by visiting [www.Scancast3D.com](http://www.Scancast3D.com)

### Order a Free Starter Kit!

One carton (10 pair) of 1124 Foamart with shipping labels and order forms.  
(Item # 5DCUSTKIT)



## FOAMART® FITTING KIT

### THE ORIGINAL FOOT IMPRESSION FOAM

When taking a negative impression of a patient's foot, there is no system that can match the convenience and accuracy of Foamart Foot Impression Kits. In just seconds, a technician can take an impression of the patient's foot that will

accurately match its size, shape and arch. Foamart is the highest quality foam available and will not crack during or after an impression. Available in convenient self-mailer boxes or in bulk form. Foamart comes in two sizes - standard (12") and long (14").

#### FOAMART KIT:

PRODUCT #	DESCRIPTION	SIZES	QUANTITY
1122	Foamart Bulk Pack - Standard	2" x 6" x 12"	12 pair
1123	Foamart Impression Kit - Standard	2" x 6" x 12"	12 pair
1124	Foamart Impression Kit - Long	2" x 6" x 14"	10 pair
1125	Foamart Bulk Pack - Long	2" x 6" x 14"	12 pair
1128	Foamart Economy Singles - Long	2" x 6" x 14"	24 pair
1129	Foamart Impression Kit - Big Foot	2 ½" x 6" x 13 ¾"	12 pair

\*See price list for more information





## APEX® HARRIS MAT SET

1110

The set includes the imprint mat, paper, ink and roller. Produces weight-bearing imprint of the foot, thereby measuring pressure disbursement and arch shape. Ink, paper, mat and roller also sold separately.

See price list for details.



## THERMOTHOTIC™ MOLDING KITS

Thermothotic Molding Kits offer a very easy, effective and quick system to heat mold inserts to properly achieve total contact with your patient's foot. The kits include a unique polyurethane molding pillow which allows your patients to remain seated throughout the molding process, easily molding the orthotic to each arch to achieve total comfort.

Thermothotic Molding Kits include ThermoGloves, silicone oven liners, a timer, thermometer and two molding pillows.

### THERMOTHOTIC MOLDING KIT

TMMK

- Apex Molding Pillow (2 each)
- Apex Thermo Gloves (1 pair)
- Silicone Oven Liner
- Digital Timer
- Thermometer



### THERMOTHOTIC MOLDING KIT WITH OVEN

TMMK-1

- Convection Oven (1 each)
- Apex Molding Pillow (2 each)
- Apex Thermo Gloves (1 pair)
- Silicone Oven Liner
- Digital Timer
- Thermometer



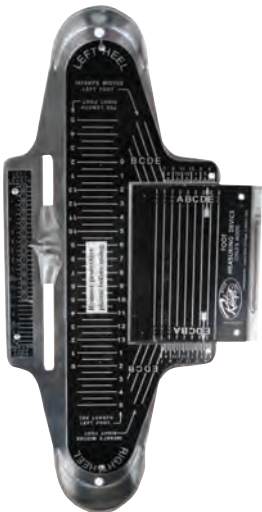
APEX® FOOT MEASURING SYSTEMS

1131

Accurately measures heel-to-toe length, heel-to-ball length (1131 only), and width of the foot. One device now available for both men and women. Individual men's, women's and children's devices also available.



1131A  
(universal)



1131C  
(children's)



1141

APEX® BUNION NIGHT SPLINT

Apex Bunion Night Splints help keep your big toe aligned and comforts pain caused by bunions. The soft bumper pad cushions the big toe, while the hook-and-loop strap acts as a lever to gradually align the big toe, relieving discomfort. Apex Bunion Night Splints should be worn at night.



	WOMEN	MEN
SMALL	4-7.5	N/A
MEDIUM	8-10.5	6-9.5
LARGE	11+	10+

Style: 3001 Bunion Night Splint  
Small, medium, large - left or right



**414 ALFRED AVENUE  
TEANECK, NJ 07666**

**TEL: 800.252.2739  
FAX: 201.808.8155  
APEXFOOT.COM**

-  apexfoothealth
-  @apexfoothealth
-  Apex Foot Health Industries
-  @apexfoothealth

---

The OHI Family of Brands

---

